

# IC-601 Controller Version 2.0

## Technical Training Course

Welcome to the technical training course for the **IC-601 Controller**. This module covers version 2.0 updates to the IC-601 Controller.

Please take the test after completing this course.

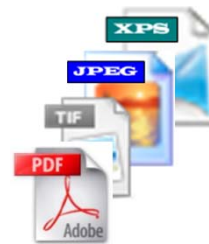


To download these files, you must have [Adobe Acrobat](#) installed on your computer.

[IC-601 Controller Workbook \(9.0 MB\)](#)



[IC-601 Controller Workbook \(6.0 MB\)](#)



# Course Objectives



**In this course you should be able to:**

1. IC-601 Ver2.0

# Lesson1 : IC-601 Version 2.0

## **Topics covered in the lesson include:**

- 1.1 Key Changes in this version
- 1.2 Details of new added functions

# 1.1 Key Changes

## Changes for the IC-601 ver.2.0

Item	Overview	Presented in Slide
<b>Support for bizhub PRESS C8000</b>	bizhub PRESS C8000 is supported in ver. 2.0. The Color Management Application “Color Centro” is supported in ver.2.0 as well.	Yes
<b>Additional Page Description Languages (XPS, PCL) support</b>	Additional Page Description Languages XPS and PCL(5c, XL) are supported.	Yes
<b>Additional Printer Driver support</b>	The Printer Driver for XPS is now supported. Note: The PCL driver is NOT supported.	Yes
<b>Compatible File Format for Direct Print</b>	<b>XPS, PCL</b> , and <b>Text</b> have been added as a compatible file format for Direct Print. (Compatible file formats: PDF/PS/PPML/TIFF/ <b>XPS/PCL/Text</b> )	No
<b>Soft Memory Switch</b>	Soft memory switches, No.32 - 36, 38, 39, 45 and 46 have been added.	Yes



## 1.2 Details of Added Functions

- bizhub PRESS C8000 support
- Additional PDL / Printer Driver support
- The feature of XPS driver
- XPS printer driver UI
- My Tab - XPS driver -
- Change of Soft Memory Switch

# **bizhub PRESS C8000 support**

The bizhub PRESS C8000 (hereafter referred to as the “C8000”) is supported from ver.2.0 as well as the bizhub PRESS C7000/C7000P/C6000/ C70hc (hereafter referred to as the “C7000”).

The Color Management Application “Color Centro” is supported in ver.2.0 as well.

	IC-601 Ver.1.0	IC-601 MR ver.	IC-601 Ver.2.0
<b>C7000</b>	<b>YES</b>	<b>YES</b>	<b>YES</b>
<b>C8000</b>	<b>NO</b>	<b>NO</b>	<b>YES</b>

# Additional PDL / Printer Driver support

XPS and PCL (5c, XL) have been added to the supported Page Description Language in Version 2.0.

The XPS driver is now supported as well.

	IC-601 MR ver.	IC-601 Ver.2.0
Page Description Language	PostScript PDF Direct Print TIFF Direct Print PPML	PostScript PDF Direct Print TIFF Direct Print PPML <b>XPS</b> <b>PCL</b>
Printer Driver	PS Plug-in PS PPD	PS Plug-in PS PPD <b>XPS</b>

PCL printer driver is  
**NOT** supported

## Supported OS with XPS printer driver

- Windows Vista (including 64bit ver.)
- Windows Server 2008 (including 64bit ver.)
- Windows 7 (including 64bit ver.)
- \* Windows XP and Mac OS are **NOT** supported

# The feature of XPS driver

- **What is XPS (XML Paper Specification) ?**

This is the proprietary [XML Paper Specification](#) that describes an electronic paper control system adopted by Microsoft.

It is a device-independent format like Adobe System's PDF format.

XPS documents can be opened on any computer where an XPS Viewer is installed, even if the computer does not have the same programs in which the original documents were created.

- **What is the XPS driver ?**

This driver conforms to the XPS format developed by Microsoft, and is highly compatible with MS-Office.

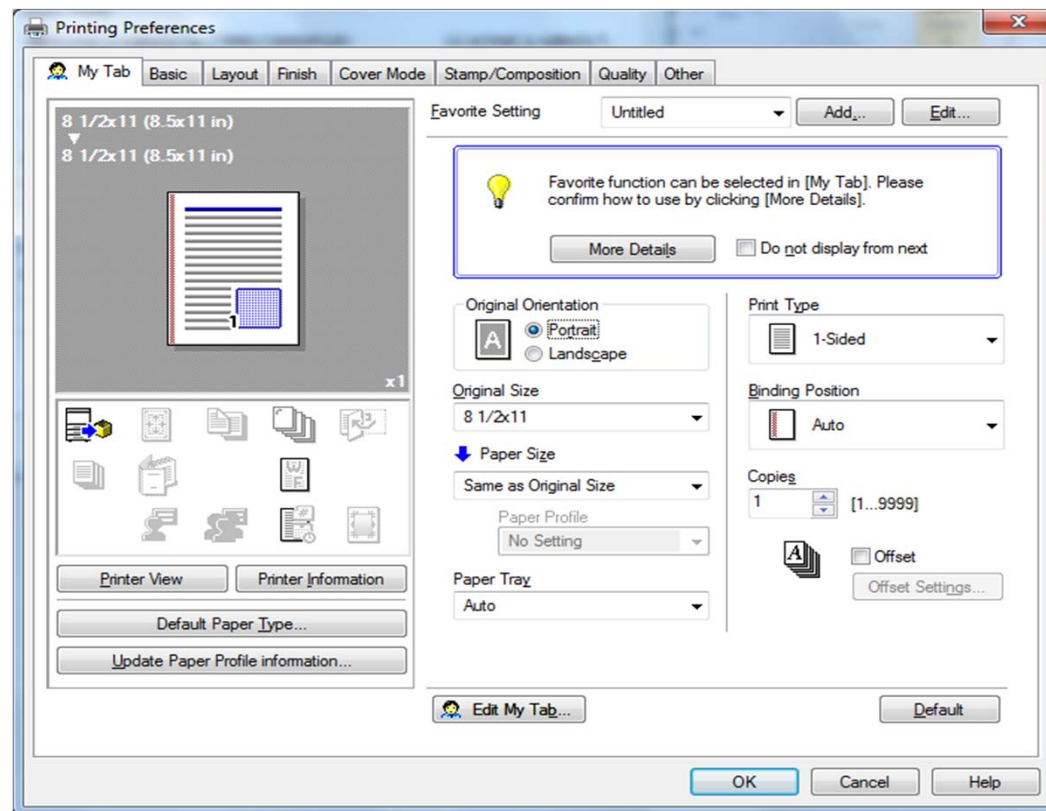
An MS-Office document that produces an error when accessed, or cannot be printed out using the PS or PCL driver may be successfully printed with the XPS driver.

The KM XPS driver has [My Tab] in the Print Settings. This will be explained in detail in the following slides.



# XPS printer driver UI

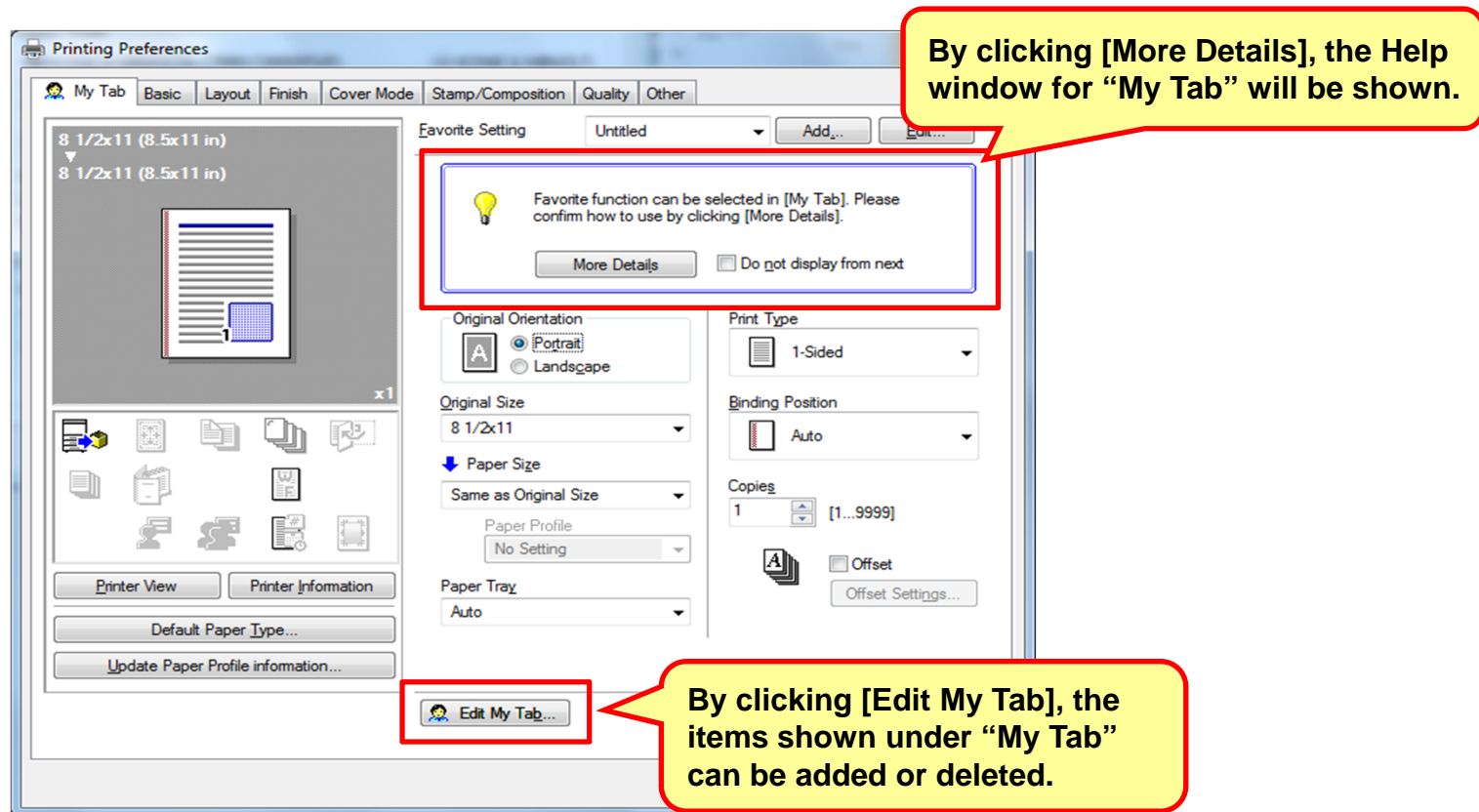
This is the UI of the new XPS printer driver for Konica Minolta.



# My Tab - XPS Driver - (1/3)

- **My Tab**

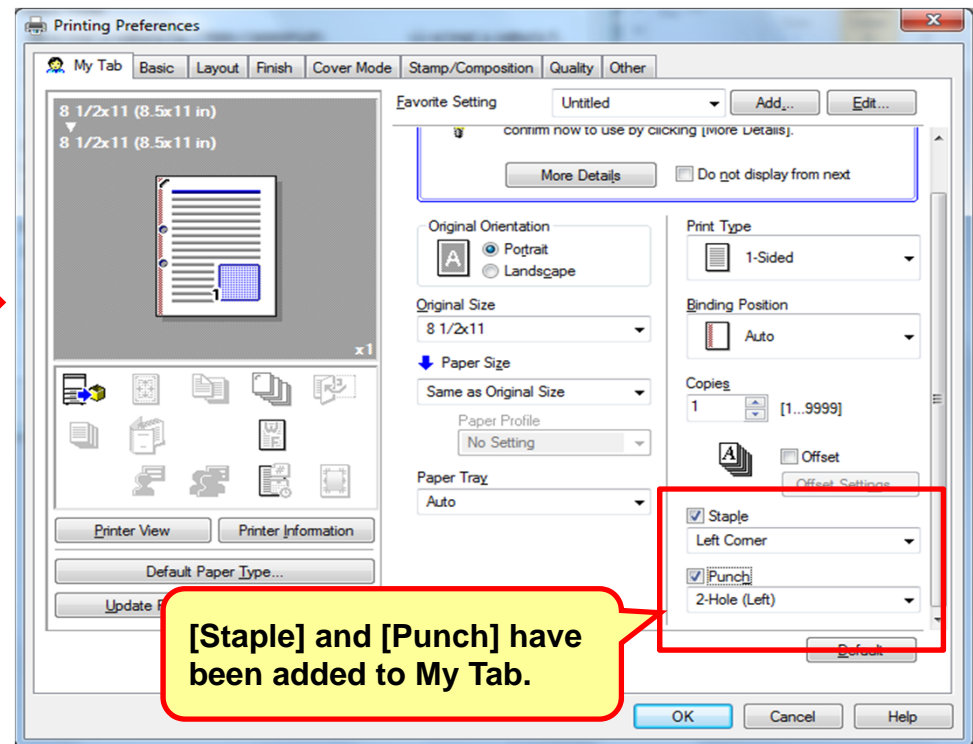
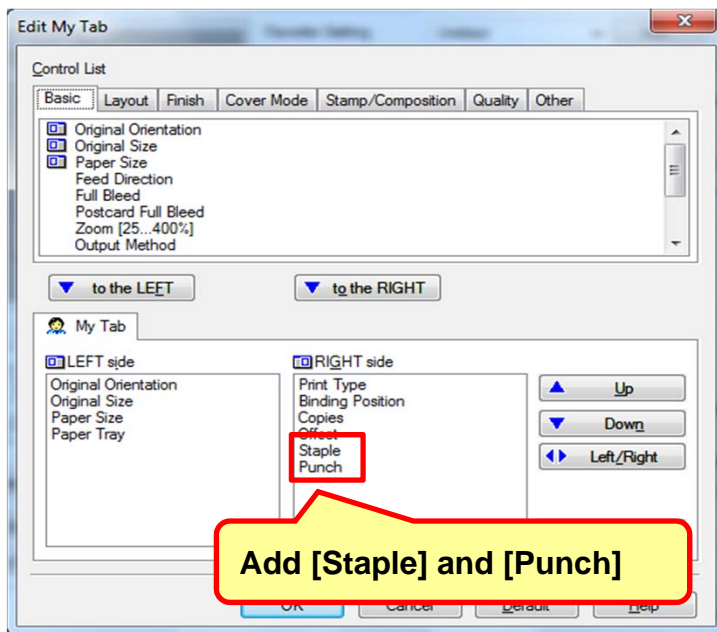
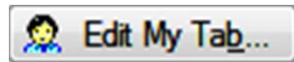
The details of the printer driver can be located in this tab.



# My Tab - XPS Driver - (2/3)

## ■ Edit My Tab

In the “Edit My Tab” window, items under My Tab can be added, deleted or relocated.

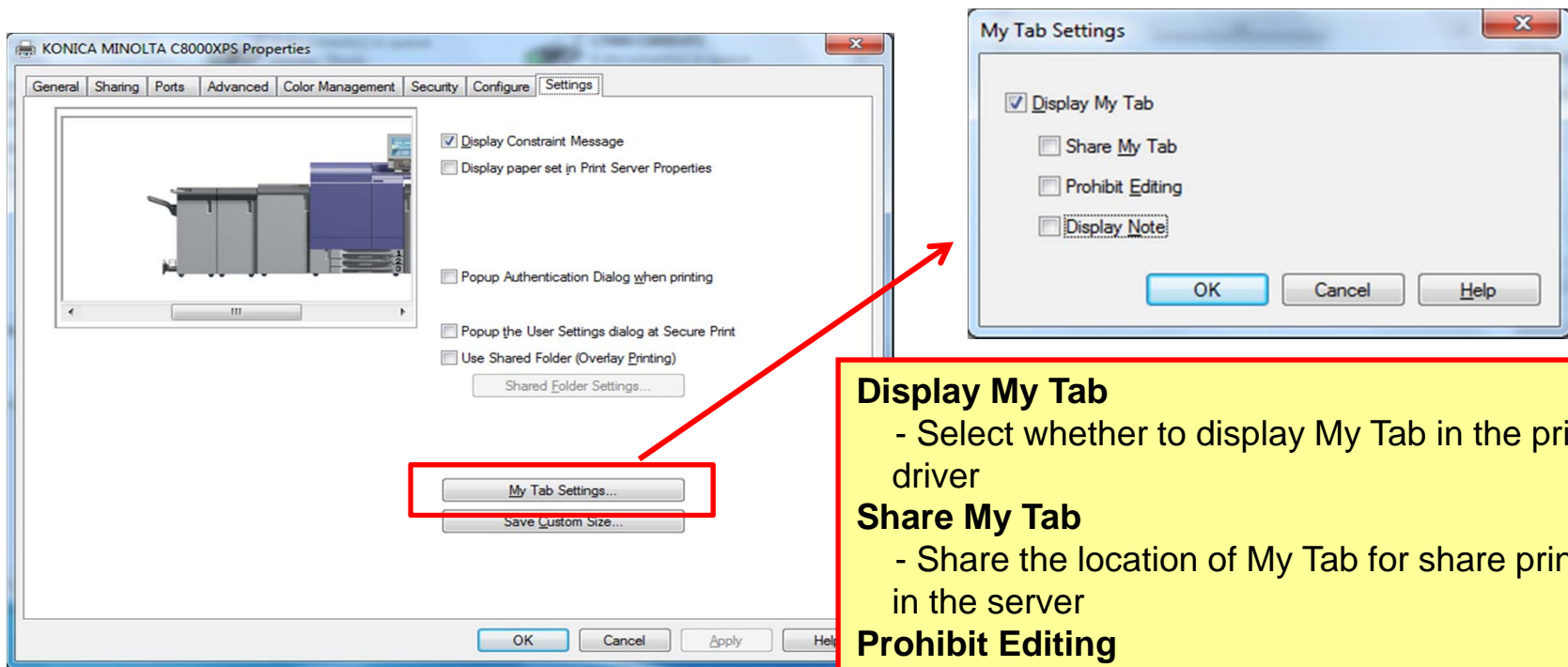




# My Tab - XPS Driver - (3/3)

## ■ My Tab Settings

My Tab settings can be changed in the property window. ([Settings] Tab)



### **Display My Tab**

- Select whether to display My Tab in the printer driver

### **Share My Tab**

- Share the location of My Tab for share printers in the server

### **Prohibit Editing**

- Prohibit editing My Tab

### **Display Note**

- Select whether to display [More Details] button in the My Tab



# Change of Soft Memory Switch (1/2)

## These Memory Switches have been added.

To change the settings of a Memory Switch, go to [Administrator Setting] – [Controller] - [System Settings] - [Software Switch Setting] in the Utility Menu.

Switch No.	Feature	Setting Value (Default=0)
32	Switches back and forth between XPS and PPML when data is received in a ZIP format. *When the setting is changed, the SUB POWER should be turned OFF and ON.	<ul style="list-style-type: none"><li>• 0 : XPS</li><li>• 1 : PPML</li></ul>
33	Switches back and forth between the settings to output the blank reverse page or not when printing a PCL data in Duplex.	<ul style="list-style-type: none"><li>• 0 : NOT output blank reverse page</li><li>• 1 : Output blank reverse page, but it will NOT be charged.</li></ul>
34	It may take a long time to print the PS Font list when a large quantity of fonts are downloaded. This setting is used to improve the speed to print the PS Font list by not including the sample characters of the download fonts in the Font list, but the Font Name only.	<ul style="list-style-type: none"><li>• 0 : Print the sample characters of the download fonts</li><li>• 1 : Do NOT print sample characters of the download fonts</li></ul>
35	When [Save] or [Print/Save] is selected as a print mode for XPS driver printing, this enables or disables the saving of the job in the Controller HDD.	<ul style="list-style-type: none"><li>• 0 : Save</li><li>• 1 : Don't save</li></ul>

# Change of Soft Memory Switch (2/2)

Switch No.	Feature	Setting Value (Default=0)
36	When print a mixed size document (Letter/A4, Portrait/Landscape) is printed in PCL, TIFF or XPS format, the binding position is different from printing the same document via PS driver. This option changes the binding position so that it matches PS driver version.	<ul style="list-style-type: none"> <li>• 0 : Do not change binding position</li> <li>• 1 : Change binding position</li> </ul>
38	Switches between modes, printing the PCL Black data (R=G=B=0) in K toner only and in CMYK.	<ul style="list-style-type: none"> <li>• 0 : Print in K toner only</li> <li>• 1 : Print in CMYK</li> </ul>
39	Switches between modes, printing PCL Gray data (R=G=B) in K toner only and in CMYK.	<ul style="list-style-type: none"> <li>• 0 : Print in CMYK</li> <li>• 1 : Print in K toner only</li> </ul>
45/46	Switches the Color mode when printing the data without the PJJ command.	<ul style="list-style-type: none"> <li>• 45/46 = 00 : Auto Color</li> <li>• 45/46 = 01 : Full Color</li> <li>• 45/46 = 10 : Grayscale</li> <li>• 45/46 = 11 : Auto Color</li> </ul>
47	Switches between modes, printing a XPS Black data (C=M=Y(=K) or Gray data in K toner only and printing in CMYK.	<ul style="list-style-type: none"> <li>• 0 : Print in CMYK</li> <li>• 1 : Print in K toner only</li> </ul>

# Course Completion

Congratulations!

You have completed the **IC-601 Controller** technical training course.

In this course, you learned about the following:

- IC-601 Ver2.0